



ARDEX WPM 3000X

Shelterseal 3000X

Self Adhesive SBS Membrane

ARDEX WPM 3000X

Shelterseal 3000X

Self Adhesive SBS Membrane



Copy available on request.

PRODUCT DESCRIPTION

Ardex WPM 3000X (Shelterseal 3000X) is a “peel and stick” bituminous/asphalt damp proof membrane protected by a cross laminated high-density polyethylene film.

Ardex WPM 3000X (Shelterseal 3000X) is made from two structural components

Bitumen/asphalt compound modified with SBS and high tack resins

This special compound has been formulated to make the product easy to install. The membrane can be adjusted should it initially be placed in the wrong position, as the adhesive on the sheet achieves final adhesion only after a few minutes.

Protective film

This is hot-laminated to the bituminous/asphalt compound and gives the membrane its mechanical and physical characteristics, such as heat stability, shape, chemical resistance, etc.

FEATURES/BENEFITS

Cold Application: installed without the use of open flames. Ideal for installation in restricted spaces.

Chemical resistance: the protective polymer film is highly resistant to acids, alkalis and other pollutants.

Flexibility and adaptability: this membrane will adapt easily to irregularly shaped surfaces, and will stretch up to 9% without breaking or cracking.

Self sealing: the membrane self seals on contact maintaining its watertightness.

Constant thickness: the membrane is manufactured using high-tech machinery which constantly monitors its thickness, and ensures that the films and synthetic materials are manufactured to the highest specifications and quality control requirements.

ACCEPTABLE SUBSTRATES

- Concretes, renders and screeds
- Fibre cement sheets
- Structural or marine plywood
- Polystyrene blocks

For use over other substrates including existing membranes contact Ardex.

TYPICAL APPLICATIONS

- Planter boxes
- Foundations
- Below-ground applications
- Retaining walls

BASIC APPLICATION INSTRUCTIONS

Surface Preparation

Surfaces to which the Ardex WPM 3000X (Shelterseal 3000X) systems are installed must be properly prepared prior to installation. All surfaces must be clean, dry, smooth, free of sharp edges, loose or foreign materials, oil, grease, and other materials that may damage the membrane. If concrete has moisture on surface use gas torch to dry and warm before priming.

Priming

Prior to the application of the membrane all prepared surfaces (except polystyrene blocks) should be primed with Ardex WPM 240 (Shelter Primer) at a rate of 5-6m² per litre and allowed to dry.

Membrane Installation

Starting at the lowest point, the membrane must be installed in accordance with the Technical Literature. Sheet edges must be overlapped a minimum of 60mm as marked on the sheets. End laps must be a minimum of 100mm, with upper sheets lapped over lower sheets. Internal and external corners of single layer systems must be reinforced with an extra layer of membrane 300mm wide. Where two layer systems are specified lap joints must be staggered. Protection material must be installed before backfilling. Backfilling must commence immediately after the membrane is installed to ensure the membrane is not left exposed to sunlight or UV radiation.

Installation of the membranes must be completed by tradespersons who have experience in the application of self-adhesive membranes.

Two Layer DPM System

In critical areas a specifier may require a second layer of Ardex WPM 3000X (Shelterseal 3000X) to be applied with laps staggered to the first layer.

PLASTERING OVER SHELTERSEAL

Coat affected area with Ardex WPM 320 (Retaining Wall 1 Part). Let coating dry then apply a second coat of Ardex WPM 320 (Retaining Wall 1 Part). While still wet broadcast dry sand onto the surface. Let Dry. When dry, plaster area with normal plaster system.

SAFETY DATA

Ardex WPM 240 (Shelter Primer) is solvent based and classified as Dangerous Goods Class 3 Packaging Group II material. It is highly flammable and should be used with appropriate safety equipment. Avoid inhalation or contact with eyes.

First Aid: If swallowed do not induce vomiting, contact a doctor or Poisons Information Centre immediately. In case of contact with eyes rinse thoroughly with water.

Spills & Leaks: Restrict access to area. Prevent material entering sewers and restricted areas. If possible cover liquid with earth, sand or absorbent material. Flush area with water.

Fire: Eliminate all sources of ignition. Firefighters should wear full protective clothing and self contained breathing apparatus with full face mask. Use dry chemicals foam or carbon dioxide to extinguish fire.

STORAGE

All rolls of Ardex WPM 3000X (Shelterseal 3000X) whether palletised or loose should be stored in a covered area protected against sunlight and UV radiation. Rolls should be stored in a vertical position on a smooth floor so as not to damage the edges.

PACKAGING

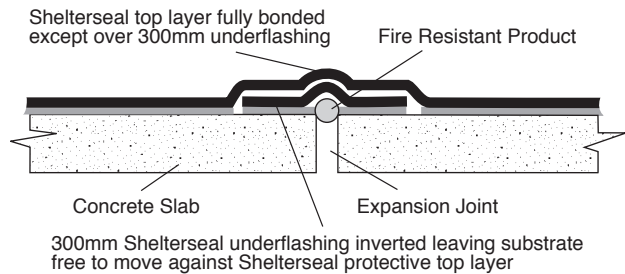
Roll size: 1m x 20m Roll weight: Approx 30kg

Other products: Shelter Primer 5 litres and 20 litres

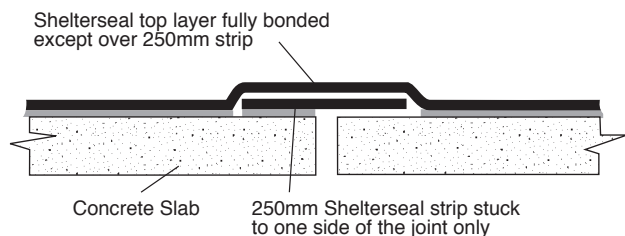
TECHNICAL PERFORMANCE DATA

Properties	Typical Values	Test Method
Thickness	1.5mm	UNI 8202
Weight	1.6kg	UNI 8202
Tensile strength long	4.35N/mm	ASTM D 638
Tensile strength trans	5.69N/mm	ASTM D 638
Longitudinal elongation of membrane	435%	ASTM D 638
Transverse elongation of membrane	380%	ASTM D 638
Tearing resistance long	83.01N	8202/9
Tearing resistance trans	73.74N	8202/9
Adhesion to primed concrete	4.9N/mm	ASTM D 1000
Adhesion to steel	5.8N/mm	ASTM D 1000
Puncture resistance	246N/65mm	ASTM E 154
Vapour transmission rate	0.3g/m/24hrs	ASTM E 96
Cold flexibility	-30°C	ASTM D 146
Environmental resistance	Conform	ASTM D 543

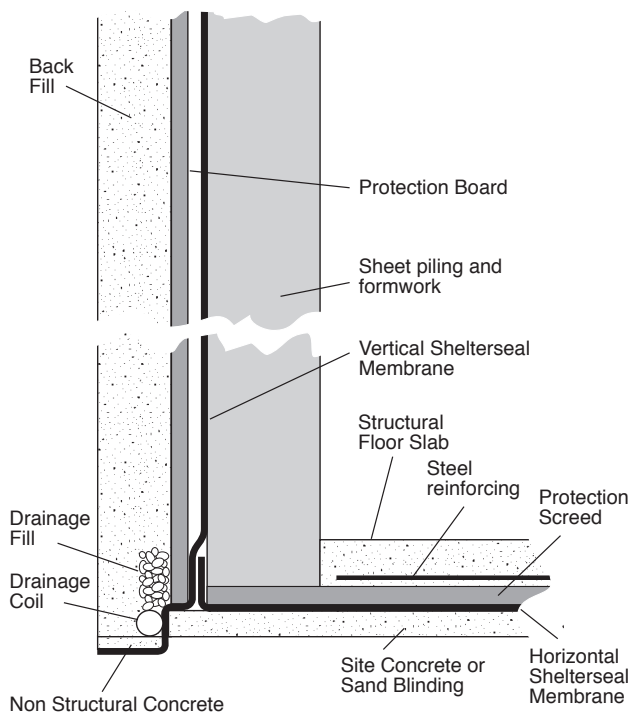
EXPANSION JOINT



CONSTRUCTION JOINT



BELOW GROUND DETAIL



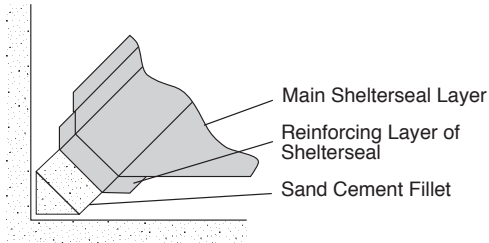
Typical details do not indicate number of layers required

ARDEX WPM 3000X

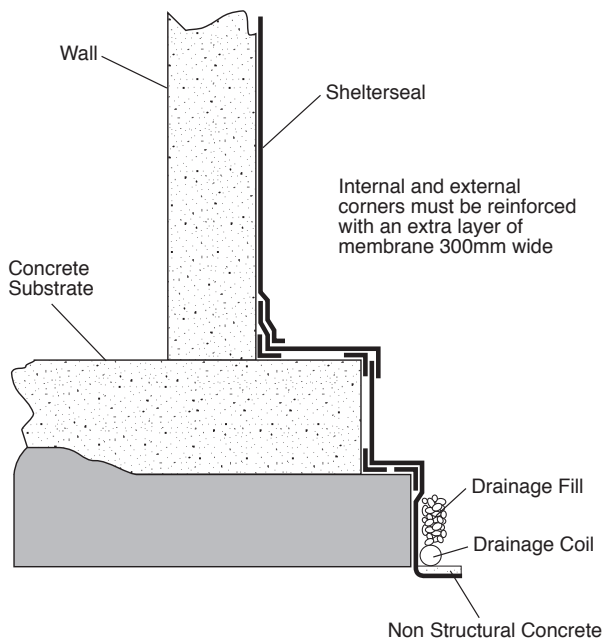
Shelterseal 3000X

Self Adhesive SBS Membrane

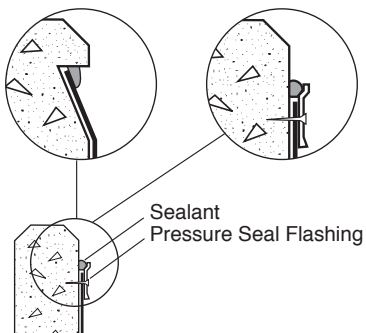
TYPICAL TURN UP DETAIL



REINFORCING OF CORNERS



FINISHING DETAIL OPTIONS





ARDEX WPM 5000HD

Shelterseal 5000HD

Self Adhesive SBS Membrane

ARDEX WPM 5000HD

Shelterseal HD

Self Adhesive SBS Membrane



Copy available on request.

PRODUCT DESCRIPTION

Ardex WPM 5000HD (Shelterseal HD) is an industrial strength “peel and stick” bituminous/asphalt membrane. Ardex WPM 5000HD (Shelterseal HD) is reinforced with a layer of polypropylene mesh giving the product exceptionally high mechanical characteristics.

Ardex WPM 5000HD (Shelterseal HD) is made from two structural components:

- Bitumen/asphalt compound modified with SBS and high tack resins
- A protective polypropylene mesh hot laminated to the bituminous/asphalt compound. This gives the membrane its mechanical and physical characteristics, such as heat and shape stability, chemical and puncture resistance

FEATURES/BENEFITS

Cold Application Installed without the use of open flames. Ideal for installation in restricted spaces.

High durability Polypropylene mesh reinforcement layer provides tough, puncture resistant finish.

Constant thickness The membrane is manufactured using the highest quality materials, standards and sheet manufacturing techniques.

Slip free surface Membrane provides an ideal, safe working surface.

ACCEPTABLE SUBSTRATES

- Concrete, renders and screeds
- Fibre cement sheets
- Structural or marine plywood

For use over other substrates including existing membranes contact Ardex

TYPICAL APPLICATIONS

- Parking decks & car parks
- Vehicular traffic structures
- Expansion joints
- Underneath clay tiles or asphalt shingles
- Any applications where the waterproofing must have high mechanical characteristics

BASIC APPLICATION INSTRUCTIONS

Surface Preparation

Surfaces to which the Ardex WPM 5000HD (Shelterseal HD) systems are installed must be properly prepared prior to installation. All surfaces must be clean, dry, smooth, free of sharp edges, loose or foreign materials, oil, grease, and other materials that may damage the membrane. If concrete has moisture on surface use gas torch to dry and warm before priming.

Priming

Prior to the application of the membrane all prepared surfaces except polystyrene block should be primed with Ardex WPM 240 (Shelter Primer) at a rate of 5-6m² per litre and allowed to dry.

Membrane Installation

Starting at the lowest point, the membrane must be installed in accordance with the Technical Literature. Sheet edges must be overlapped a minimum of 60mm as marked on the sheets. End laps must be a minimum of 100mm, with upper sheets lapped over lower sheets. Internal and external corners of single layer systems must be reinforced with an extra layer of membrane 300mm wide. Where two layer systems are specified lap joints must be staggered. Protection material must be installed before backfilling. Backfilling must commence immediately after the membrane is installed to ensure the membrane is not left exposed to sunlight or UV radiation.

Installation of the membranes must be completed by tradespersons who have experience in the application of self-adhesive membranes.

Applying asphalt directly over Ardex WPM 5000HD (Shelterseal HD)

The asphalt should be applied as soon as possible after the Ardex WPM 5000HD (Shelterseal HD) membrane has been installed. Ardex recommend applying a minimum 50mm compacted overlay for carpark areas. The topping should be applied at a temperature of between 120-150°C.

PLASTERING OVER SHELTERSEAL

Coat affected area with Ardex WPM 320 (Retaining Wall 1 Part). Let coating dry then apply a second coat of Ardex WPM 320 (Retaining Wall 1 Part). While still wet broadcast dry sand onto the surface. Let Dry. When dry, plaster area with normal plaster system.

SAFETY DATA

Ardex WPM 240 (Shelter Primer) is solvent based and classified as Dangerous Goods Class 3 Packaging Group II material. It is highly flammable and should be used with appropriate safety equipment. Avoid inhalation or contact with eyes.

First Aid: If swallowed do not induce vomiting, contact a doctor or Poisons Information Centre immediately. In case of contact with eyes rinse thoroughly with water.

Spills & Leaks: Restrict access to area. Prevent material entering sewers and restricted areas. If possible cover liquid with earth, sand or absorbent material. Flush area with water.

Fire: Eliminate all sources of ignition. Firefighters should wear full protective clothing and self contained breathing apparatus with full face mask. Use dry chemicals foam or carbon dioxide to extinguish fire.

STORAGE

Ardex WPM 5000HD (Shelterseal HD) is supplied in white cardboard cartons. All rolls should be stored in a vertical position, covered area protected against UV radiation.

PACKAGING

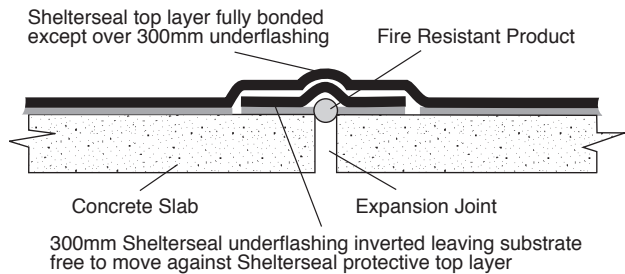
Roll size: 1m x 20m Roll weight: Approx 30kg

Other products: Shelter Primer 5 litres and 20 litres

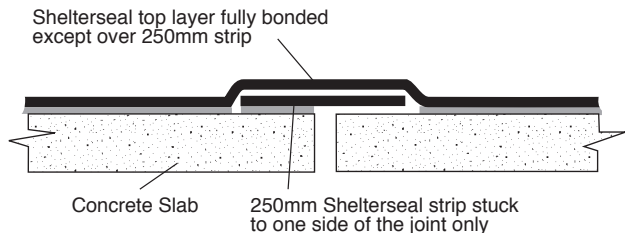
TECHNICAL PERFORMANCE DATA

Properties	Typical Values	Test Method
Thickness	1.5mm	UNI 8202
Weight	1.6kg	UNI 8202
Colour	Black	
Softening point	110°C	
Temperature resistance (maximum)	150°C	
Tensile strength (longitudinal)	152kg/8cm	
Tensile strength (transverse)	124kg/8cm	
Elongation (longitudinal)	32%	ASTM D638
Elongation (transverse)	21%	ASTM D638
Tearing (longitudinal)	350N	UNI 8202/9
Tearing (transverse)	300N	UNI 8202/9
Adhesion to primed concrete	4.9 N/mm	ASTM D1000
Adhesion to steel	5.8 N/mm	ASTM D1000
Puncture resistance	220 N/65mm	ASTM E 154
Vapour transmission rate	0.3g/m/24hrs	ASTM E 96
Cold flexibility	-30°C	ASTM D 146

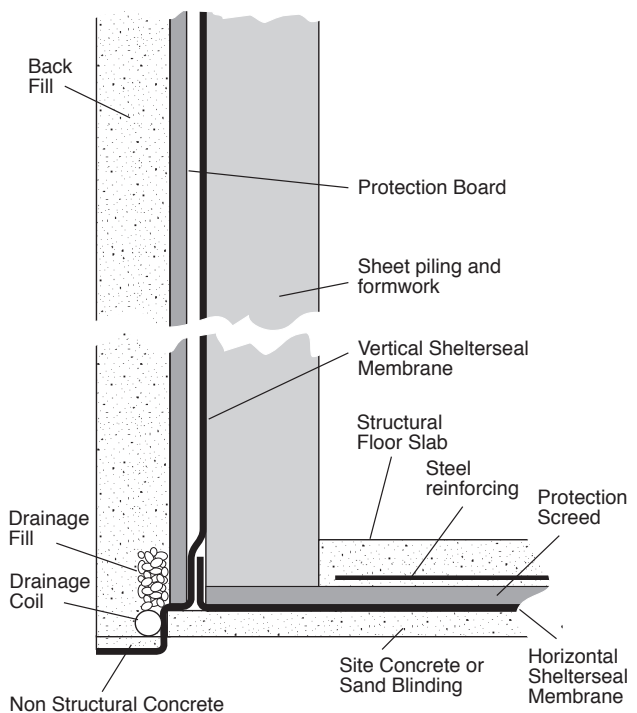
EXPANSION JOINT



CONSTRUCTION JOINT



BELOW GROUND DETAIL



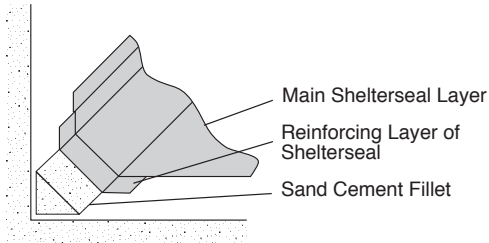
Typical details do not indicate number of layers required

ARDEX WPM 5000HD

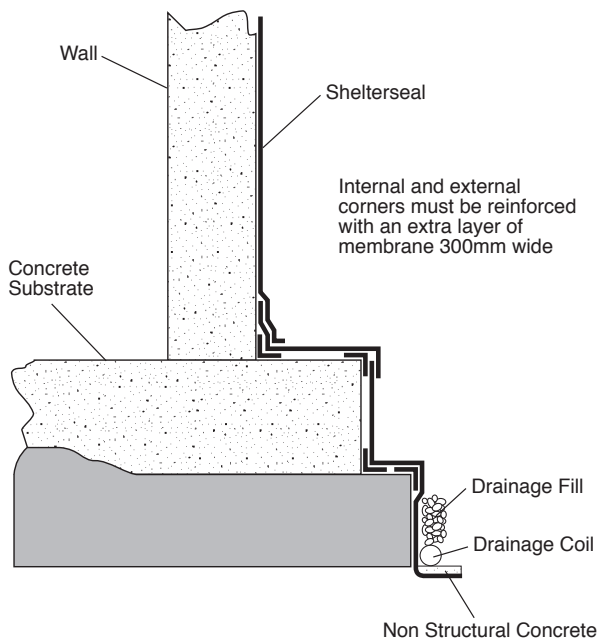
Shelterseal HD

Self Adhesive SBS Membrane

TYPICAL TURN UP DETAIL



REINFORCING OF CORNERS



FINISHING DETAIL OPTIONS

